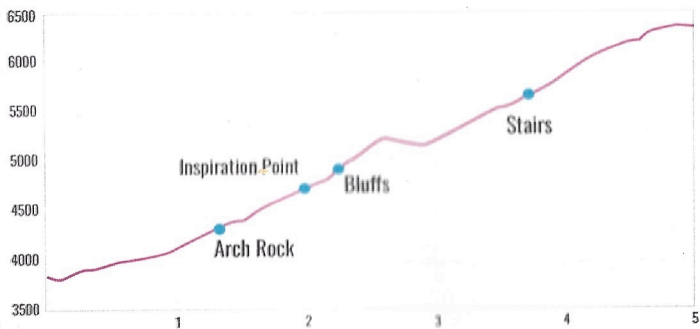
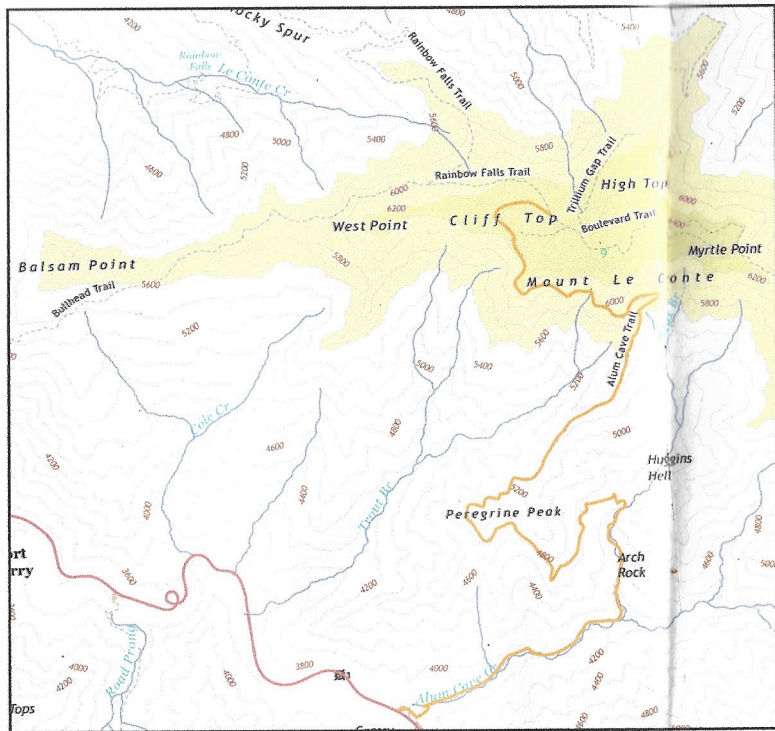


5/16 Leconte trails down!



- 1.1 - Styx Branch (drains Huggins Hell)
- 1.4 - Arch Rock (formed by freezing and thawing)
- 1.6 - after footbridge, 1993 slide removed stretch of mountain 0.25 m long and 20' deep
- 1.8 - entering heath bald
- 2.0 - Inspiration Point (heath bald), Little Duck Hawk Ridge W (anakeesta formation - anakeesta is Cherokee for "place of the balsams"), Eye of the Needle at the top, Myrtle Point NE
- 2.3 - Alum Cave Bluffs - dust contains minerals found in the driest areas of the world
- 2.5 - side trail to Gracies Pulpit - named for Gracie McNichol who climbed to LeConte on her 92nd birthday - from the rocks you can see the 4 points of the LeConte massif: **West Point, Cliff Top, High Top, and Myrtle Point**
- 3.8 - stairs to replace a washed out switchback (1970s and 1992)

Legend has it that a man named Huggins once declared he would "explore the area or go to hell trying." He was never heard from again, and is presumed to have suffered the latter fate.



"The current record for leaving the lodge, descending Alum Cave Trail, driving to Gatlinburg, purchasing beer, then returning is 2 hours and 50 minutes. Another Le Conte employee, on an emergency quest for popcorn and a newspaper, descended the trail in 33 minutes, then completed the return trip in only 1 hour and 18 minutes."